

# LaYR 2.0 SQUARE FIXED DOWNLIGHTS

## DESIGNER & PERFORMANCE Series (Up to 2000 Lumens)



The LaYR 2.0 Square Fixed Performance and Designer downlight is a versatile lighting solution that can adapt to different lighting needs and style preferences. Its design includes a 2" aperture with square baffle, offering users 5 distinct optic options to adjust the beam spread. With a lumen output range of 500 to 2000 lumens, it can provide sufficient illumination for various purposes, such as accent lighting or general illumination.

To add to its adaptability, the downlight can be further customized by choosing from a range of baffle and trim finishes, drivers, housings, and accessories. This customization allows users to create a unique downlight that fits their specific requirements and style preferences.



Image Above Shown With Designer Deep Smooth Black Baffle and Black Trim Ring

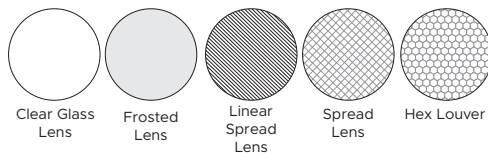


Image Above Shown With Performance Deep Smooth Black Baffle and Black Trim Ring

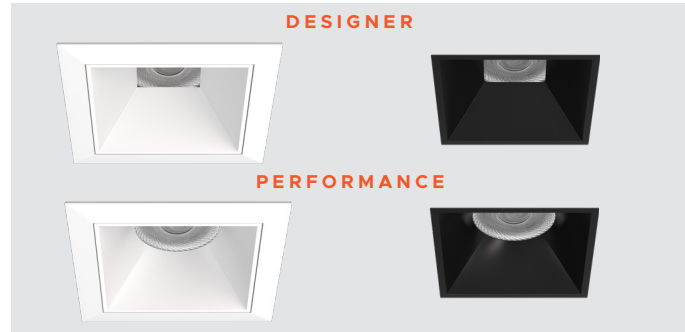
### TRIM & BAFFLE FINISHES



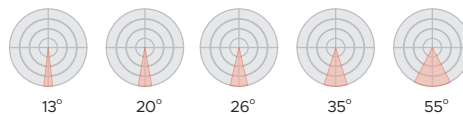
### ACCESSORIES



### FLANGED TRIM TRIMLESS



### 50mm Beam Optics:



### SPECIFICATIONS

	Designer Series	Performance Series
Im/W	127	127
Lumen Output	500 - 2000lm	500 - 2000lm
Luminaire Height	4 15/16"	4 15/16"
Optic Size	50mm	50mm
Aperture @ Optic	Square	Round
Beam Optics	13°, 20°, 26°, 35°, 55°	13°, 20°, 26°, 35°, 55°
Baffle Type	Deep Smooth Finish (Depth 1") Cut Off Angle - 26° Shielding Angle - 52°	Deep Smooth Finish (Depth 1") Cut Off Angle - 24° Shielding Angle - 60°
Trim Type	Flange Trim, Trimless	Flange Trim, Trimless
Baffle & Trim Finishes	White, Black, Satin Silver & Champagne	White, Black, Satin Silver & Champagne
CRI - 80 (2-Step)	35K & 40K	35K & 40K
CRI - 90 (2-Step)	27K, 30K, 35K, 40Kc *90 CRI Option has an R9 Value Greater than 50	27K, 30K, 35K, 40K *90 CRI Option has an R9 Value Greater than 50
Ceiling Thickness Range	(min) 3/8" - (max) 1 1/2"	(min) 3/8" - (max) 1 1/2"
Hole Cut Size	3 3/8" (REM) - 3 1/2" (OF/IC)	3 3/8" (REM) - 3 1/2" (OF/IC)
Accessories Options	Hex Louver, Frosted Lens, Linear Spread Lens, Spread Lens, Clear Lens	Hex Louver, Frosted Lens, Linear Spread Lens, Spread Lens, Clear Lens
Accessories Qty	Up to 2	Up to 2
Drivers	0-10V, TRIAC, ELV, Lutron Ecosystem, DALI	0-10V, TRIAC, ELV, Lutron Ecosystem, DALI
Dimming	1%, 5%, 0.1%	1%, 5%, 0.1%
Voltage	120-277 Volt	120-277 Volt
Housing	Non-IC, IC Rated, Remodel	Non-IC, IC Rated, Remodel
Lumen Maintenance	80,000	80,000
Power Factor	> .95	> .95
THD	< 20kHz	< 20kHz
Approved Location	Dry/Damp/Wet	Dry/Damp/Wet
Certifications	UL 1598/UL 2108 Listed US and Canada	UL 1598/UL 2108 Listed US and Canada

# LaYR 2.0 SQUARE FIXED DOWNLIGHTS

## DESIGNER & PERFORMANCE Series (Up to 2000 Lumens)



### Ordering Guide

#### HOUSING



#### LIGHT ENGINE & BAFFLE



#### OPTIONS

NOTES:



SAFETY US-CA  
Suitable for Damp locations.



#### HOUSING & DRIVER

A. MODEL	B. TRIM	C. HOUSING STYLE	D. MOUNTING	E. LUMEN OUTPUT
LFXQ2 Square Fixed 2in	FT Flange Trim SF Spackle Flange Trimless MW Millwork	OF Open Frame (Non-IC) (Rough-In Mounting Plate) w/ 5/8" Collar  IC IC Rated Housing w/ 5/8" Collar  CP Chicago Plenum  RM Remodel (Non-IC) .....	SMB Standard Mounting Bars Min: 14.25" / Max: 26"  ACB Adjustable Commercial Bar Hanger (Includes C-Channel Bracket and Heavy Duty Bar Hangers) Min: 11" / Max: 26.75"  REM Remodel	500 500 lm, 5W 750 750 lm, 8W 1000 1000 lm, 10W 1250 1250 lm, 12W 1500 1500 lm, 15W 1750 1750 lm, 18W 2000 2000 lm, 22W
	RM housing Style and REM mounting required for Millwork	Additional ceiling collar depths available in (H) Options below  OF and RM Non-IC rated cannot come in contact with insulation.	ACB must be selected at initial order	Narrow spot max is 1500 lm based on Baffle choice see cross reference below  1750 lm max for dual dim.  Please see driver matrix for additional details
F. VOLTAGE	G. DRIVER	H. HOUSING OPTIONS (May choose multiple options below)		
UNV 120-277v	S1 1% Dimming (0 - 10v) DD Dual Dimming (2-wire dimming - Triac/ELV/Phase Cut - 5% Dimming) SAX 1% Dim with Aux PEQ Lutron, Hi-Lume Premier EcoSystem 0.1% Fade to Black ELO EldoLED 0.1% Dim to Dark driver DALI DALI 2.0 Compatible	NN NONE RD Remote Driver (Consult Factory) C1 1" Ceiling Depth Collar C5 1.5" Ceiling Depth Collar AWNRR Lutron Athena Wireless Node (RF- only)		
	SAX Driver Code is required for the Athena Wireless Node 1750 lm max for dual dim.	AWNRR Requires SAX Driver Code		

#### LIGHT ENGINE & BAFFLE

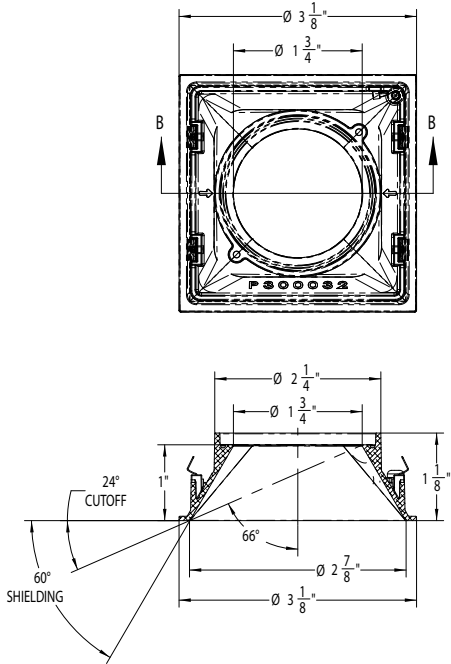
I. LIGHT ENGINE	J. BAFFLE TYPE	K. BEAM OPTICS	BAFFLE/BEAM ANGLE/ MAX LUMENS CROSS REFERENCE					
FPQ2 Fixed Designer Square 2in Square/Square	Flange Trim DSF Deep, Smooth Flanged DMF Deep, Milli-Groove Flanged Spackle Flange Trimless DSS Deep, Smooth Spackle DMS Deep, Milli-Groove Spackle	50mm Optic Square 13 Narrow Spot 13° 20 Spot 20° 26 Narrow Flood 26° 35 Flood 35° 55 Wide Flood 55°	Designer Square/Square 50mm Optic					
			BAFFLE TYPE	13°	20°	26°	35°	55°
			QQF	1250	2000	2000	2000	2000
			QQS	1250	2000	2000	2000	2000
FPQ2 Fixed Performance Square 2in Square/Round	Flange Trim QRF Deep, Smooth Flanged Spackle Flange Trimless QRS Deep, Smooth Spackle	50mm Optic Round 13 Narrow Spot 13° 20 Spot 20° 26 Narrow Flood 26° 35 Flood 35° 55 Wide Flood 55°	Performance Square/Round 50mm Optic					
			BAFFLE TYPE	13°	20°	26°	35°	55°
			QRF	1250	2000	2000	2000	2000
			QRS	1250	2000	2000	2000	2000
		Refer to Beam/Max Lumens cross reference	Note: Maximum Lumens based on 3500K 80CRI test values with no accessories. Beam angles do change with certain accessories					

L. BAFFLE FINISH	M. TRIM FINISH	N. CRI COLOR TEMP.	OPTIONS	OPTIONS
WH White BK Black SS Satin Silver CG Champagne CC Custom Color	WH White BK Black SS Satin Silver CG Champagne CC Custom Color  NN None (Required with spackle flange only)	835 80 CRI; 3500K 840 80 CRI; 4000K  927 90 CRI; 2700K 930 90 CRI; 3000K 935 90 CRI; 3500K 940 90 CRI; 4000K  *90 CRI Option has an R9 Value Greater than 50	O. ACCESSORIES HL Hex Louver CL Clear Glass FG Frosted Glass SG Striped Glass (Linear Spread) XG Check Glass (Spread)	P. FACTORY OPTIONS SSC Seismic Safety Cable WET Wet Location
White  Black  Satin Silver  Champagne				
		All CCT are 2 Step MacAdam Ellipse		

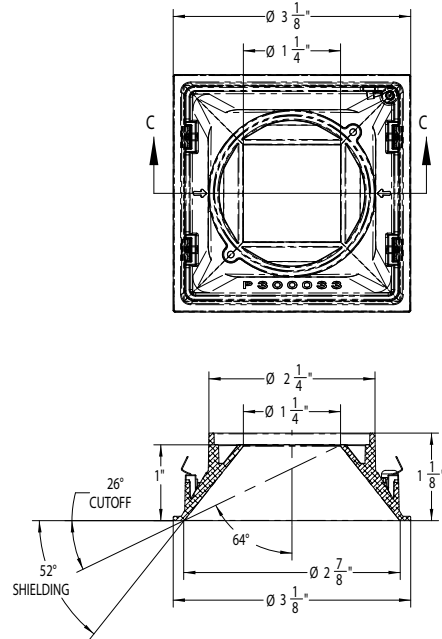


**FIXTURE DIMENSIONS**

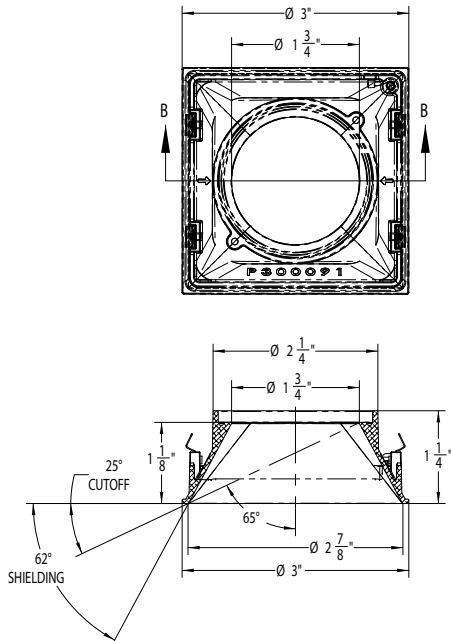
**Trimless Performance**



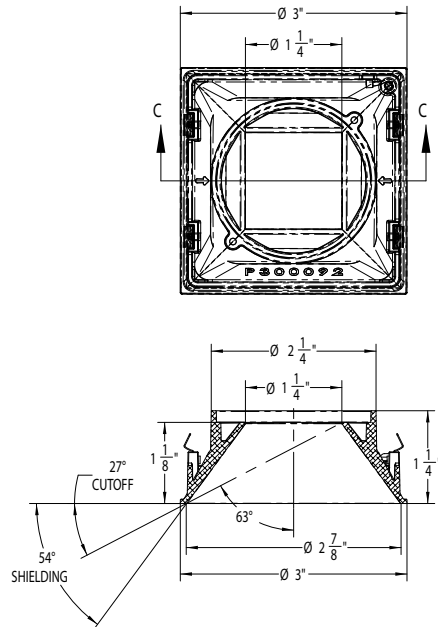
**Trimless Designer**



**Trim Performance**

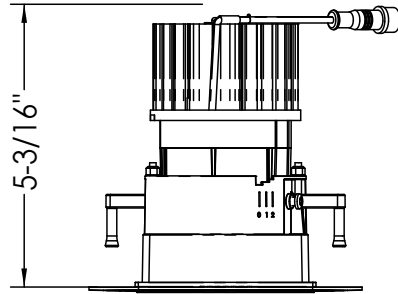


**Trim Designer**

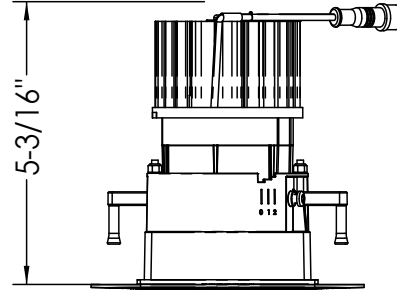


HEAT SINK DIMENSIONS

TRIMLESS

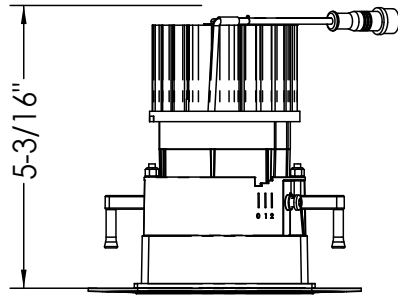


**TRIMLESS DESIGNER**  
Up to 2000 Lumens

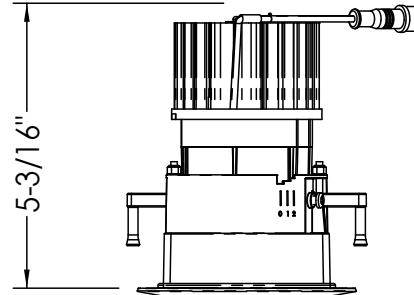


**TRIMLESS PERFORMANCE**  
Up to 2000 Lumens

TRIM

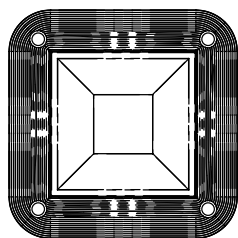


**TRIM DESIGNER**  
Up to 2000 Lumens



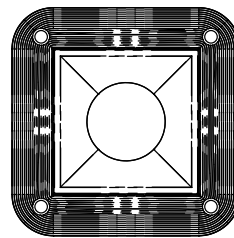
**TRIM PERFORMANCE**  
Up to 2000 Lumens

TRIM DIMENSIONS



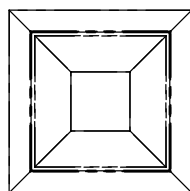
**TRIMLESS DESIGNER**  
 CEILING CUTOUT  
 4-3/8 (REM) : 4-1/2" (OF/IC)

CEILING THICKNESS  
 (min) 3/8" - (max) 1-1/2"



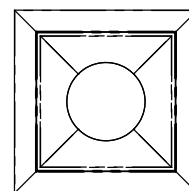
**TRIMLESS PERFORMANCE**  
 CEILING CUTOUT  
 4-3/8 (REM) : 4-1/2" (OF/IC)

CEILING THICKNESS  
 (min) 3/8" - (max) 1-1/2"



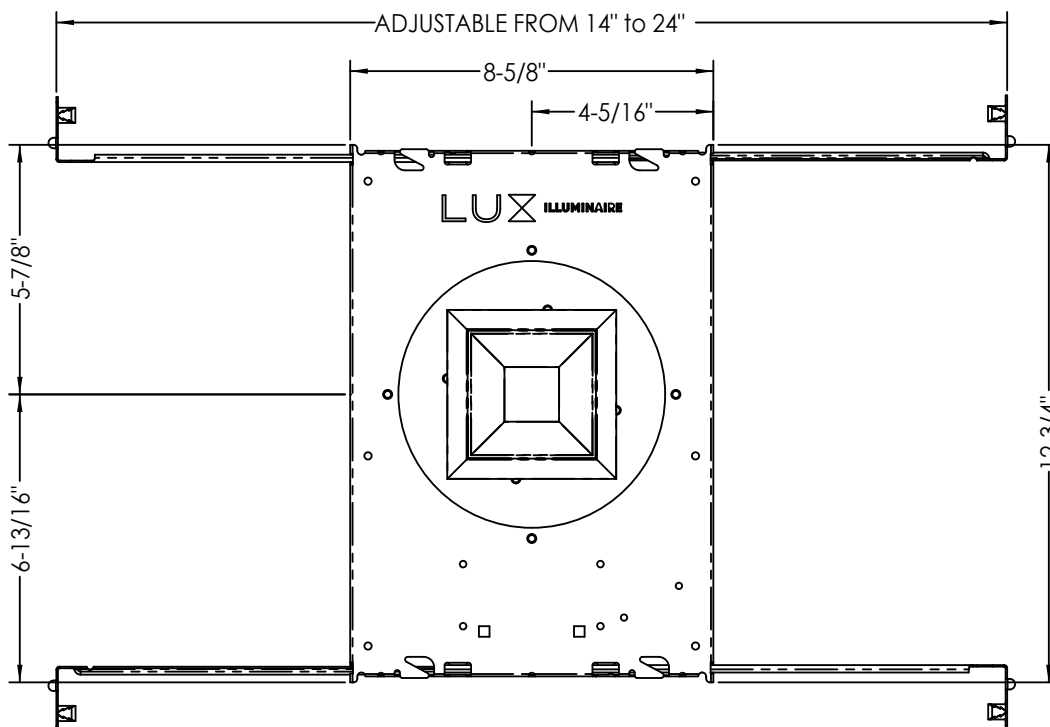
**TRIM DESIGNER**  
 CEILING CUTOUT  
 4-3/8 (REM) : 4-1/2" (OF/IC)

CEILING THICKNESS  
 (min) 3/8" - (max) 1-1/2"



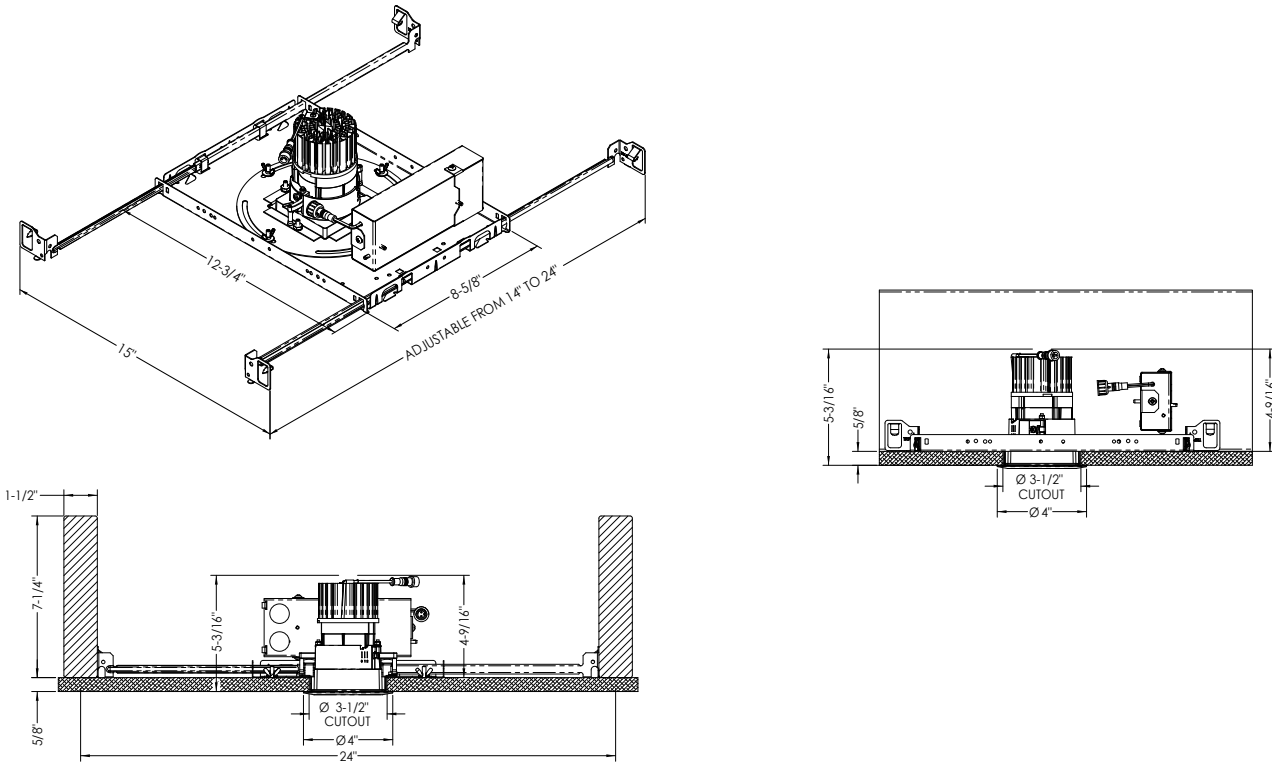
**TRIM PERFORMANCE**  
 CEILING CUTOUT  
 4-3/8 (REM) : 4-1/2" (OF/IC)

CEILING THICKNESS  
 (min) 3/8" - (max) 1-1/2"

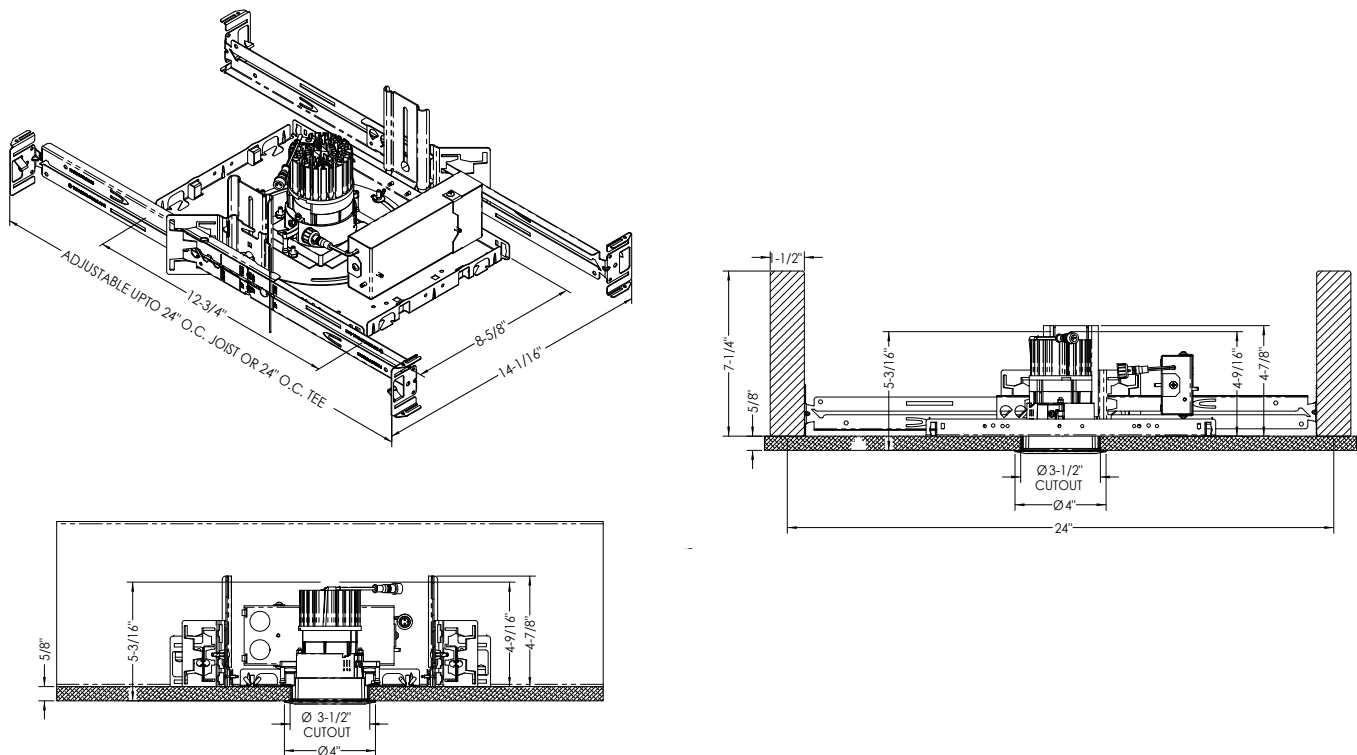


**Open Frame**

Standard Heat Sink with Standard Mounting Bars (SMB)

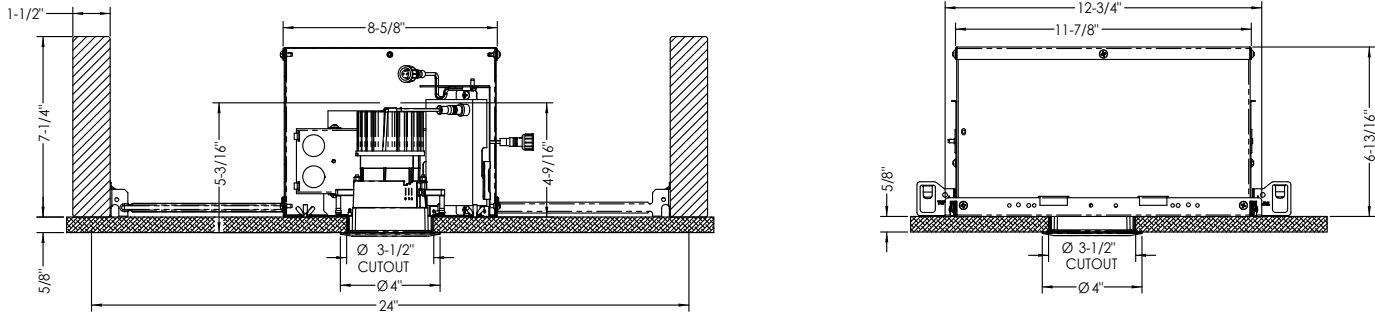


Standard Heat Sink with Adjustable Commercial Bar Hanger (ACB)

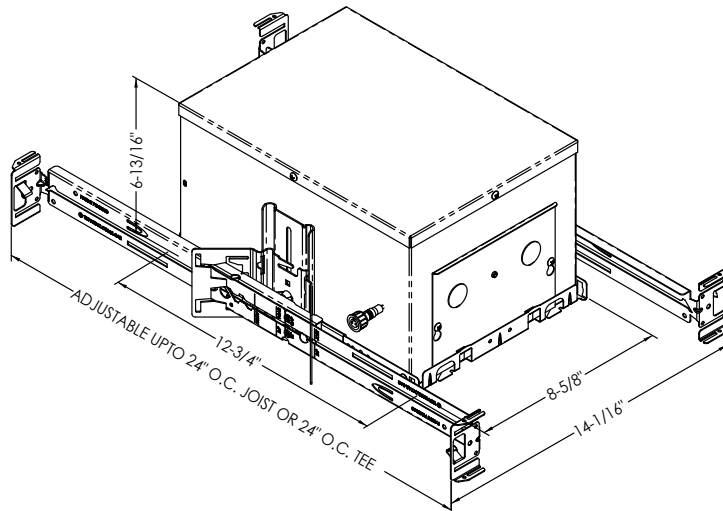
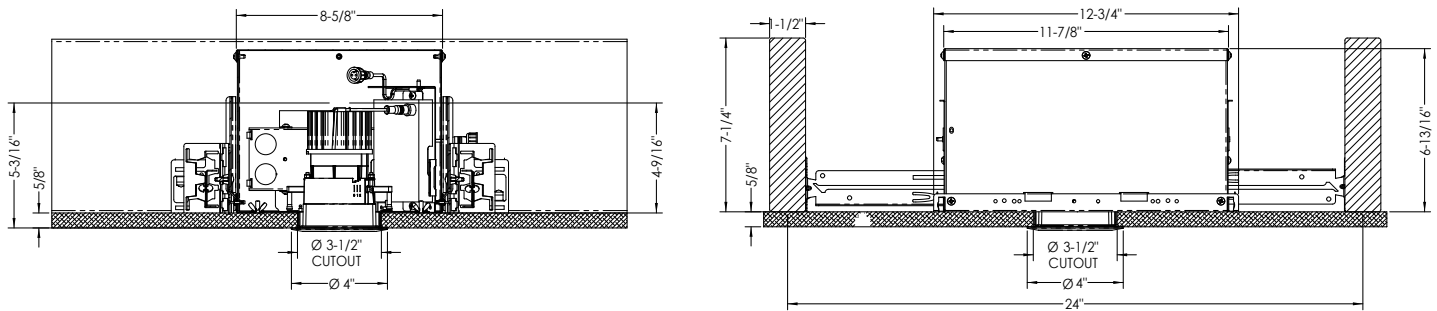


**IC Frame**

Standard Heat Sink with Standard Mounting Bars (SMB)



Standard Heat Sink with Adjustable Commercial Bar Hanger (ACB)



Remodel

